

Economic contribution of Manitoba's Agriculture and Agri-food sector



Manitoba's agriculture and agri-food sector brings

\$18.8 billion

IN DIRECT OUTPUT,¹

GENERATING \$5 billion
in GDP

7%

of the
provincial
GDP



1 in 20 jobs

comes from our agriculture and agri-food sector,

EMPLOYING

37,015

people
in Manitoba



THE ECONOMIC IMPACT

of the agriculture and agri-food sector in Manitoba extends far beyond its direct contributions

The estimated total
ECONOMIC IMPACT² IS
\$30.9 billion
IN OUTPUT,



\$10 billion
in GDP

The sector creates over

80,000
JOBS IN MANITOBA

including
indirect
jobs



MANITOBA'S AGRICULTURE AND AGRI-FOOD SECTOR IS STRONG AND GROWING.

Find out more at www.manitoba.ca/agriculture

¹ Output consists of farm cash receipts from primary agriculture and sales from food manufacturing sector.

² Total impact includes direct and indirect impacts.

* All data from 2023

The estimated impact includes direct and indirect impacts. Direct impacts (direct output, GDP, and employment data) were sourced from Statistics Canada, 2023. Indirect impacts - Manitoba Bureau of Statistics, Manitoba Input-Output Model, derived from the Statistics Canada supply use tables (2019).

Economic Contribution of the Manitoba Crop Sector

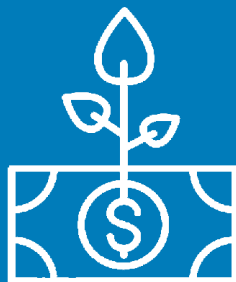


Manitoba's crop sector brings

**\$6.6
billion**
IN DIRECT OUTPUT



GENERATING



**\$2.5
billion**
IN GDP

EMPLOYING
9,190
people
in Manitoba



**THE
ECONOMIC
IMPACT**

of the crop
sector in
Manitoba
extends far
beyond its direct
contribution

The estimated total
ECONOMIC IMPACT IS
**\$8.8
billion**



IN OUTPUT,
\$3.9 billion
in GDP

The sector creates over

20,400
JOBS IN MANITOBA

including
indirect
jobs



**MANITOBA'S AGRICULTURE AND AGRI-FOOD SECTOR
IS STRONG AND GROWING.**

Find out more at www.manitoba.ca/agriculture

All data from 2023

The estimated impact includes direct and indirect impacts. Direct impacts (direct output, GDP, and employment data) were sourced from Statistics Canada, 2023. Indirect impacts - Manitoba Bureau of Statistics, Manitoba Input-Output Model, derived from the Statistics Canada supply use tables (2019).

Manitoba 

Economic Contribution of the Manitoba Livestock Sector



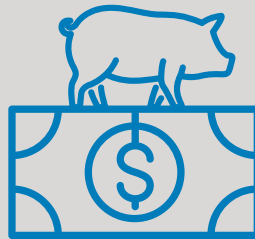
Manitoba's livestock sector brings

\$3.3 billion

IN DIRECT OUTPUT

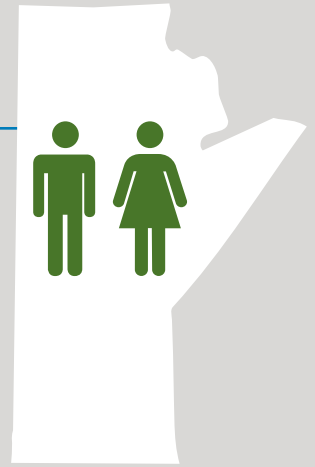


GENERATING



\$600 million
IN GDP

EMPLOYING
8,790
people
in Manitoba



THE ECONOMIC IMPACT

of the livestock sector in Manitoba extends far beyond its direct contribution

The estimated total
ECONOMIC IMPACT IS

\$6.3 billion



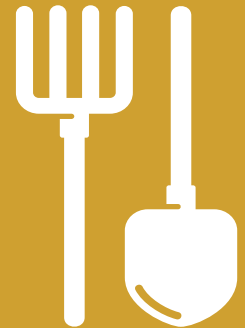
IN OUTPUT
\$1.7 billion
in GDP

The sector creates over

22,100

JOBS IN MANITOBA

including indirect jobs



MANITOBA'S AGRICULTURE AND AGRI-FOOD SECTOR IS STRONG AND GROWING.

Find out more at www.manitoba.ca/agriculture

All data from 2023

The estimated impact includes direct and indirect impacts. Direct impacts (direct output, GDP, and employment data) were sourced from Statistics Canada, 2023. Indirect impacts - Manitoba Bureau of Statistics, Manitoba Input-Output Model, derived from the Statistics Canada supply use tables (2019).

Manitoba

Economic Contribution of the Manitoba Food Processing Sector

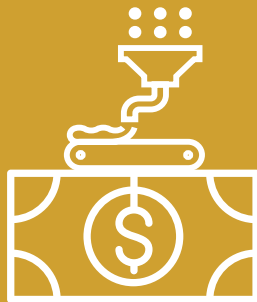


Manitoba's food processing sector brings

\$8.9 billion
IN DIRECT OUTPUT

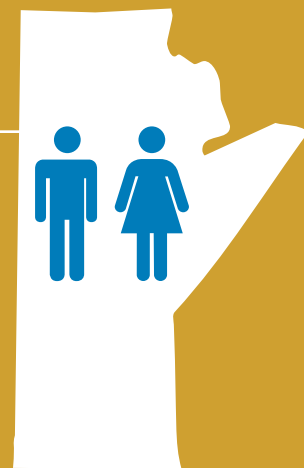


GENERATING



\$1.7 billion
IN GDP

EMPLOYING
17,715
people
in Manitoba



THE ECONOMIC IMPACT

of the food processing sector in Manitoba extends far beyond its direct contribution

The estimated total
ECONOMIC IMPACT IS

\$15.8 billion



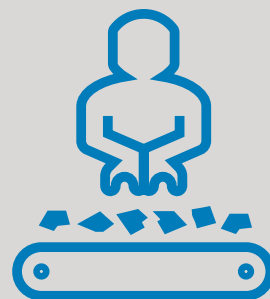
IN OUTPUT
\$4.4 billion
in GDP

The sector creates over

37,200

JOBS IN MANITOBA

including indirect jobs



MANITOBA'S AGRICULTURE AND AGRI-FOOD SECTOR IS STRONG AND GROWING.

Find out more at www.manitoba.ca/agriculture

All data from 2023

The estimated impact includes direct and indirect impacts. Direct impacts (direct output, GDP, and employment data) were sourced from Statistics Canada, 2023. Indirect impacts - Manitoba Bureau of Statistics, Manitoba Input-Output Model, derived from the Statistics Canada supply use tables (2019).

Manitoba 