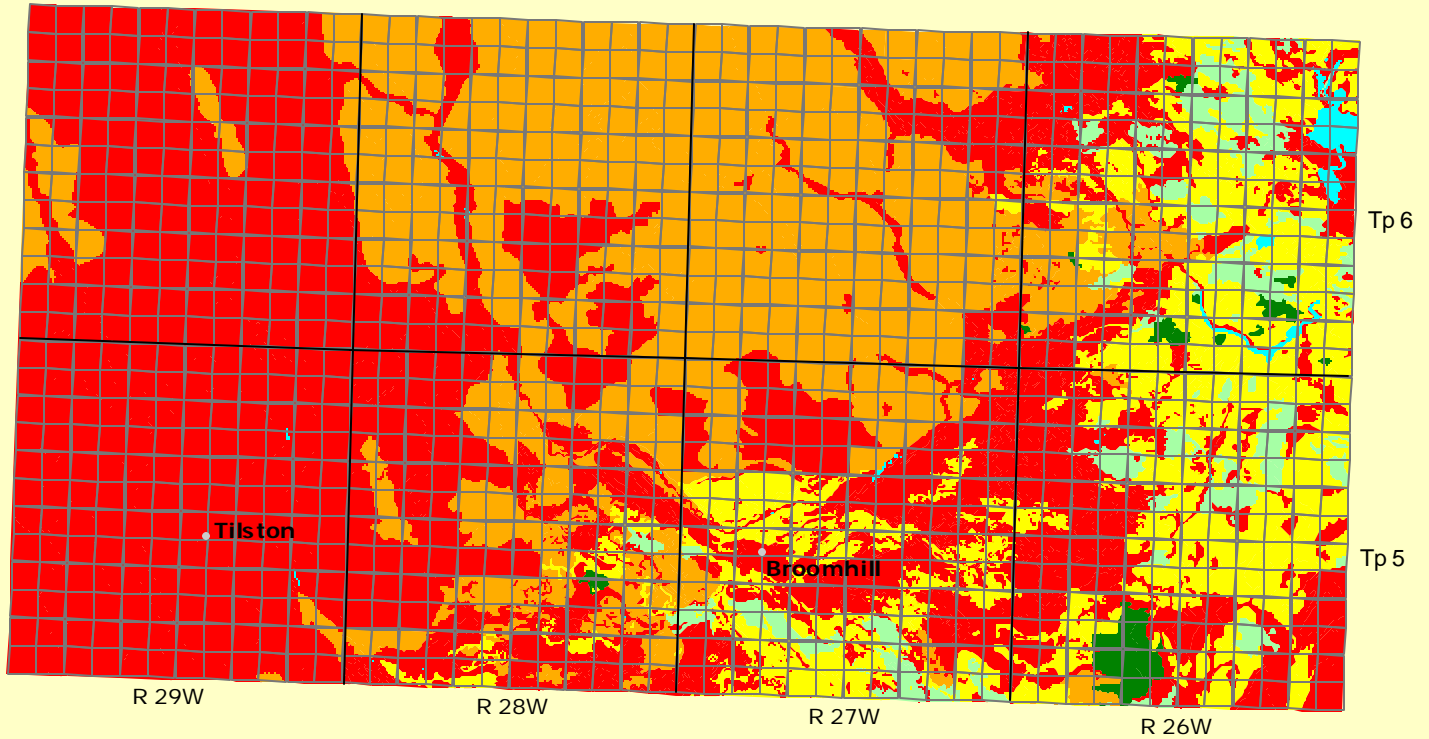
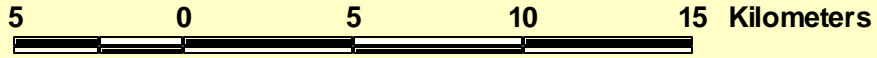

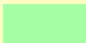







# Rural Municipality of Albert

## Soil Suitability for Irrigated Potato Production



### Soil Suitability Classes for Irrigated Potato Production

	Area (ha)	% of RM
 Class 1	618	0.8
 Class 2	2384	3.1
 Class 3	9908	12.8
 Class 4	23729	30.6
 Class 5	40627	52.2
 water		
 unclassified		



Universal Transverse Mercator (NAD27) Projection  
Derived from Detail Soil Information (1:20 000)

*subject to revision*

Agricultural Resources Section  
Soils and Crops Branch  
Manitoba Agriculture and Food